

Lean Shelf Wagon



Product description

The Lean Dolly has been designed to carry SLC's and component trays widely used within the automotive industry. It is designed to be compatible with both your milkrun and automated systems.

For optimised external transport and warehousing the Lean dolly can be used together with the Lean adaptor pallet.

Benefits

- Improve work flow
- Reduce handling costs
- Enable reduction of stock level
- Reduce need for floor space
- Improve ergonomics
- Fast and safe truck loading
- Optimize vehicle fill





Lean Shelf Wagon

Lean Shelf Wagon

External dimensions 800 x 1200 x 1680 mm
Tare weight 70-75 kg
Wheel size 160 mm wheels
Wheel type 2 fixed & 2 swivel
Wheel material PU
Working capacity
Shelf 150 kg
Total unit 150 kg

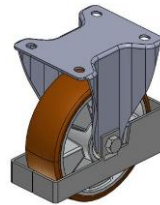
K.Hartwall wheels are equipped with high quality ball bearings and hub caps for high performance and wheel protection.

Surface treatment: Blue zinc plated acc. to EN-ISO2081

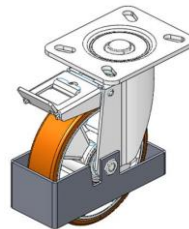
Can be towed with all other towable dollies



Standard wheels



ESD hard plastic wheel and non-marking ESD hard plastic wheel



Polyurethane wheel or polyurethane ESD wheel

Designed to carry SLC's

- 4 stack of 600 x 400 mm
- 8 stacks of 300 x 400 mm

Accessories

- Integrated strapping
- Number of shelves (1-4)
- Towing device

Options

- Total brake on 1 or 2 swivel wheels
- RFID compatibility