

## Lean Dolly Type 1200 x 400



### Product description

The Lean Dolly has been designed to carry SLC's and component trays widely used within the automotive industry. It is designed to be compatible with both your milkrun and automated systems.

For optimised external transport and warehousing the Lean dolly can be used together with the Lean adaptor pallet.

### Benefits

- Improve work flow
- Reduce handling costs
- Enable reduction of stock level
- Reduce need for floor space
- Improve ergonomics
- Fast and safe truck loading
- Optimize vehicle fill





## Lean Dolly Type 1200 x 400

### Lean Dolly - 1/2 Pallet

- External dimensions ..... 1200 x 400 x 157 mm
- Tare weight ..... 10,6 kg
- Wheel size ..... 100 mm wheels
- Wheel type ..... 2 fixed & 4 swivel (Type A)  
..... 6 swivel (Type B)
- Wheel material ..... CPD, rubber or PU
- Working capacity:
  - CPD – standard and ESD ..... 500 kg
  - Rubber/PU – standard ..... 500 kg
  - Polyamide – ESD ..... 500 kg

K.Hartwall wheels are equipped with high quality ball bearings and hub caps for high performance and wheel protection.

Surface treatment: Blue zinc plated acc. to EN-ISO2081

Compatible with the following Lean Adaptor Pallets:

- Next Generation (DOS1696 & DOS1725)
- Type III (DOS1405)

Safe stacking up to 15 pieces ..... 1950 mm



### Options

- Total brake on 1 or 2 swivel wheels
- RFID compatibility

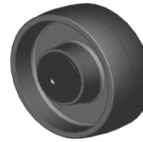
### Standard wheels



Compound wheel



Rubber wheel



ESD hard plastic wheel and non-marking ESD hard plastic wheel



Polyurethane wheel or polyurethane ESD wheel

### Designed to carry SLC's and trays

- 1 stack of 1200 x 400 mm
- 2 stacks of 600 x 400 mm

### Accessories

- Ergonomic handle

